

TAMTRON ONE TIMBER SCALE



Load precisely every time — with the world's most accurate and best-selling type-approved timber scale.

Insufficient loading reduces efficiency, while overloading may lead to penalties. The One Timber scale eliminates these risks by ensuring all loads comply with vehicle weight limits and road regulations. This allows operators to maximize payload while staying fully compliant and safe.

Weighing takes place during loading, allowing the correct weight to be achieved immediately and avoiding unnecessary trips to external truck scales. This saves time and improves operational efficiency.

The One Timber scale is easy to use and designed for fast-paced loading, with a capacity of up to 10 tonnes. This scale is type-approved (MID) and can be used for commercial purposes within the EU. Invoicing can be based directly on the weighing data of the verified scale.

Tamtron, a trusted partner in weighing solutions, has earned the confidence of leading forest machine manufacturers, who have integrated Tamtron's technology into their machines.

BENEFITS

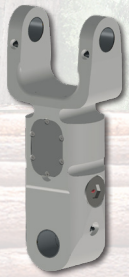
- ▶ Legal for trade
- ▶ Easy to install and to use
- ▶ 24/7 real-time data transfer from scale to Tamtron's cloud service
- ▶ Machine operator's loading style does not affect the weighing result
- ▶ Robust design for all conditions

**POSSIBILITIES
FOR MORE PROFITABLE
TIMBER BUSINESS.
WEIGHING INFORMATION
IN YOUR POCKET 24/7**

2t

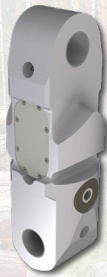
AVAILABLE WEIGHING LINKS

TechnologyStrain gauge link, wireless
 Capacity10t
 TypeATNV



Dimensions, mm (upper – lower)

184–100
184–80



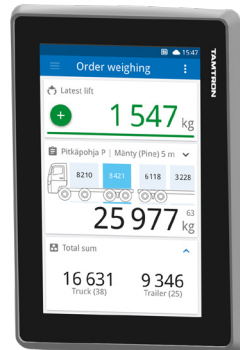
80–100
80–80



234–100
234–80

INNOVATIVE DISPLAY AND STRAIN GAUGE WEIGHING LINK

The One Timber scale combines the innovative features of the Tamtron One display and our next-generation strain gauge weighing link. These components communicate wirelessly, ensuring fast and efficient operation. Installation is quick, and the system is ready to use in no time. Engineered for heavy-duty, round-the-clock use, the scale delivers precise weighing even in challenging conditions. With minimal maintenance needs, the One Timber scale performs reliably despite fluctuating temperatures and humidity.



One Timber Truck



One Timber Forwarder

TAMTRON ONE DISPLAY SPECIFICATIONS

- ▶ Dimensions (w/o mount) 205 x 144 x 45 mm
- ▶ Weight (inc. mount) 1 kg
- ▶ Operational voltage 12/24VDC
- ▶ Protection class IP67
- ▶ Operating temperature -25/+50°C
- ▶ Display operation 7" capacitive touch screen
- ▶ Resolution 800 x 480
- ▶ Connection interfaces 4G, WLAN, GPS, USB, Ethernet, Bluetooth

TURN EVERY LOAD INTO PROFIT – DISCOVER ONE TIMBER:



TAMTRON'S CLOUD SERVICE – ONE CLOUD

With the One Cloud service, weighing data flows seamlessly from the scale to the cloud, ready for use and distribution within the organization and to stakeholders. The information can be accessed in real time, wherever it's needed. Tamtron's One Cloud improves your operational efficiency by streamlining data handling and everyday workflows.



- ▶ Manage data securely with a simple and intuitive interface
- ▶ Send orders directly to the scale quickly and easily
- ▶ Access weighing data anywhere, anytime – 24/7

TAMTRON

Vestonkatu 11
 FI-33561 Tampere
 Finland

Tel. +358 3 3143 5000
 sales.onboard@tamtron.com

WWW.TAMTRON.COM

Tamtron is a leading supplier of advanced weighing solutions, offering innovative weighing and dosing technologies, comprehensive lifecycle services, and modern cloud-based digital services. Supporting industries such as construction, mining, wood processing, waste management, logistics, and manufacturing, Tamtron operates globally with its headquarters in Finland. The company has a strong presence across Europe through its subsidiaries and worldwide partner network.

YOUR LOCAL DEALER: